


Table of Contents

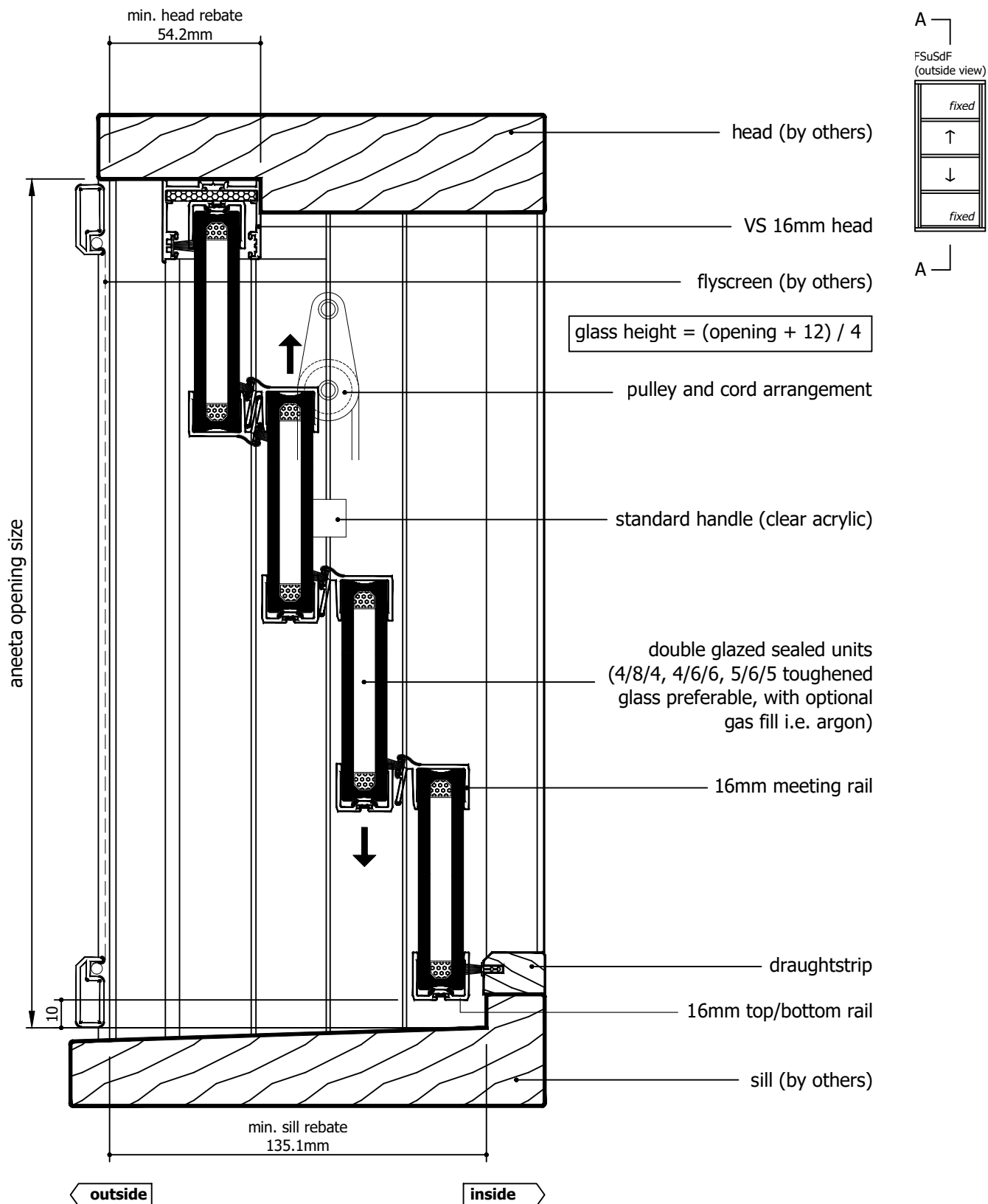
| Page | View | Cover Type | Sill Type |
|------|--------------------|--|------------------|
| 2 | Vertical Section | Timber covers | Draughtstrip |
| 3 | Vertical Section | Timber covers | Draughtstrip x 2 |
| 4 | Vertical Section | Timber covers | VS Sill |
| 5 | Vertical Section | Timber covers | VS HP Sill |
| 6 | Vertical Section | Timber covers | None |
| 7 | Vertical Section | Timber covers | Flapseal |
| 8 | Horizontal Section | Timber covers | - |
| 9 | Vertical Section | Aluminium covers outside, timber covers inside | Draughtstrip |
| 10 | Vertical Section | Aluminium covers outside, timber covers inside | Draughtstrip x 2 |
| 11 | Vertical Section | Aluminium covers outside, timber covers inside | VS Sill |
| 12 | Vertical Section | Aluminium covers outside, timber covers inside | VS HP Sill |
| 13 | Vertical Section | Aluminium covers outside, timber covers inside | None |
| 14 | Vertical Section | Aluminium covers outside, timber covers inside | Flapseal |
| 15 | Horizontal Section | Aluminium covers outside, timber covers inside | - |
| 16 | Vertical Section | Aluminium covers | Draughtstrip |
| 17 | Vertical Section | Aluminium covers | Draughtstrip x 2 |
| 18 | Vertical Section | Aluminium covers | VS Sill |
| 19 | Vertical Section | Aluminium covers | VS HP Sill |
| 20 | Vertical Section | Aluminium covers | None |
| 21 | Vertical Section | Aluminium covers | Flapseal |
| 22 | Horizontal Section | Aluminium covers | - |

| Rev | Description | Approved By | Date |
|-----|---|-------------|-----------|
| I | 16mm flapseal option updated to QEZ48 | DF | 02/2/2026 |
| H | Delete P008 and replace with P229 - VS Sill | DF | 06/8/2025 |
| G | VS 300Pa/800Pa sill adaptor changed to VS Sill/VS HP Sill | DF | 0ct2024 |
| F | Add various sill options | SE | Jun2024 |
| E | Update layout | SE | May2024 |
| D | Update lock and extension pin | SE | Dec2020 |
| C | Update sill and lock | RL | Jun2013 |


| | | | | |
|--|--|--|----------------------------|---------------|
| <p>Proprietary and confidential</p> <p>The information contained in this drawing is the sole property of Aneeta Australia. Any reproduction in part or as a whole, without the written permission of Aneeta Australia is prohibited.</p> | <p>Title: 4 pane 16mm double glazed INTERLOCKING sashless vertical sliders in timber frames FSuSdF</p> |  <p>949 Stud Road, Rowville VIC 3178, ABN 80 062 883 729</p> | Material: in Timber frames | |
| | | | Finish: - | |
| | | | Die/Part: - | |
| | | | Dwg No: VS 4P16 FSuSdF T | |
| Drwn: UF | Chk: - | Date: Jan2010 | Scale: 1:2@A4 | Sheet 1 of 22 |
| | | Revision: I | | |



IF IN DOUBT ASK - DO NOT SCALE DRAWING



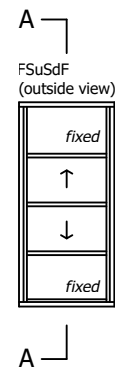
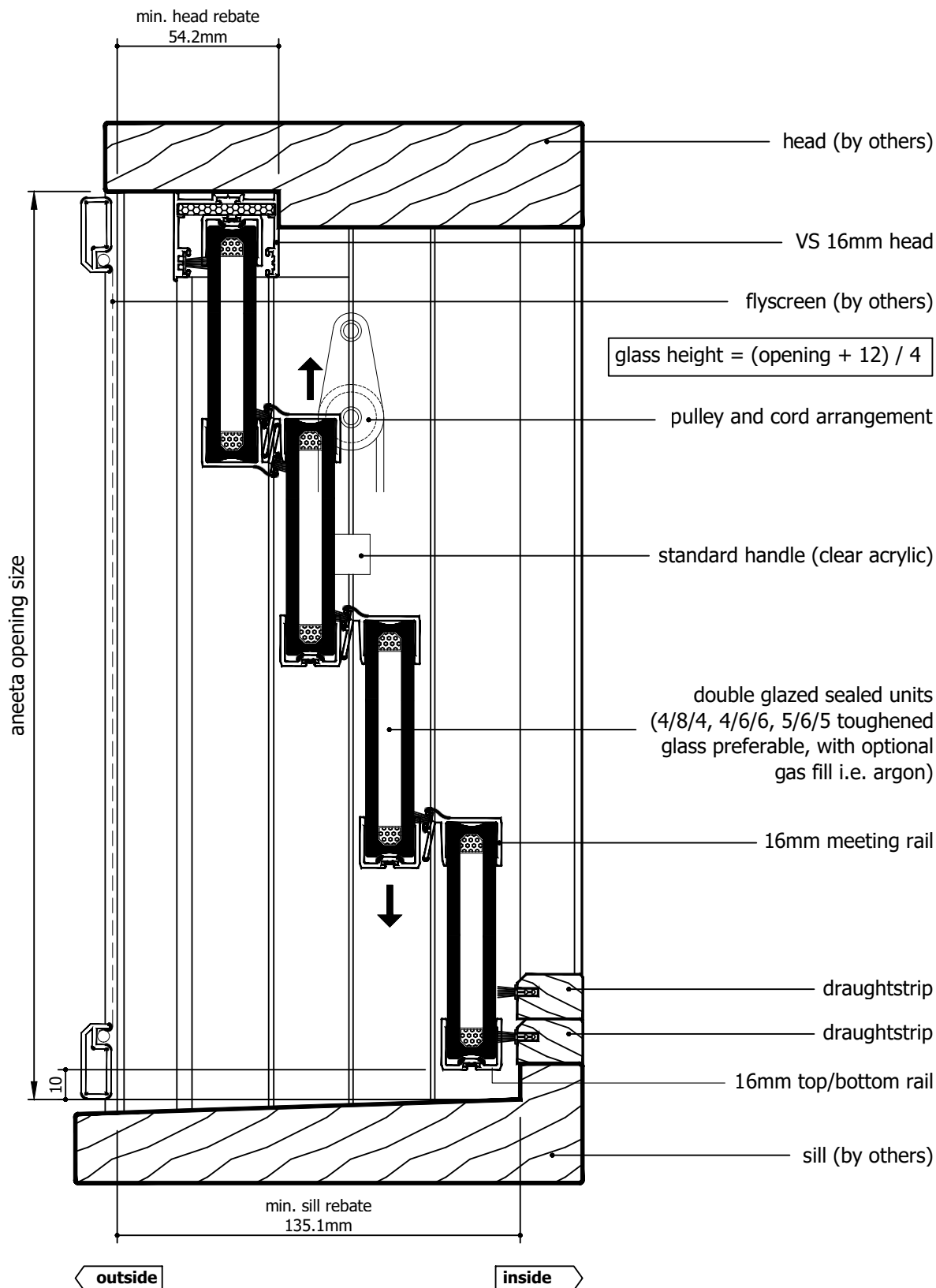
| Rev | Description | Approved By | Date |
|-----|---|-------------|-----------|
| I | 16mm flapseal option updated to QEZ48 | DF | 02/2/2026 |
| H | Delete P008 and replace with P229 - VS Sill | DF | 06/8/2025 |
| G | VS 300Pa/800Pa sill adaptor changed to VS Sill/VS HP Sill | DF | Oct2024 |
| F | Add various sill options | SE | Jun2024 |
| E | Update layout | SE | May2024 |
| D | Update lock and extension pin | SE | Dec2020 |
| C | Update sill and lock | RL | Jun2013 |

| | | | | | | | |
|--|--|---------------|----------------------|----------------------|--|--------------------|---------------------------------------|
| <p>Proprietary and confidential</p> <p>The information contained in this drawing is the sole property of Aneeta Australia. Any reproduction in part or as a whole, without the written permission of Aneeta Australia is prohibited.</p> | <p>Title: 4 pane 16mm double glazed INTERLOCKING sashless vertical sliders in timber frames FSuSdF with timber covers and draughtstrips at sill vertical section A-A</p> | | | |  949 Stud Road, Rowville VIC 3178, ABN 80 062 883 729 | | <p>Material: in Timber frames</p> |
| | | | | | | | <p>Finish: -</p> |
| | | | | | | | <p>Die/Part: -</p> |
| | | | | | | | <p>Dwg No: VS 4P16 FSuSdF T</p> |
| | <p>Drwn: UF</p> | <p>Chk: -</p> | <p>Date: Jan2010</p> | <p>Scale: 1:2@A4</p> | <p>Sheet 2 of 22</p> | <p>Revision: I</p> | |


M:\Documentation\Website Downloads\3. Timber Frames\1. Vertical\1. Double Hung\VS 4P16 FSuSdF T (I) - 4 pane 16mm double glazed INTERLOCKING sashless vertical sliders in timber frames FSuSdF.dwg



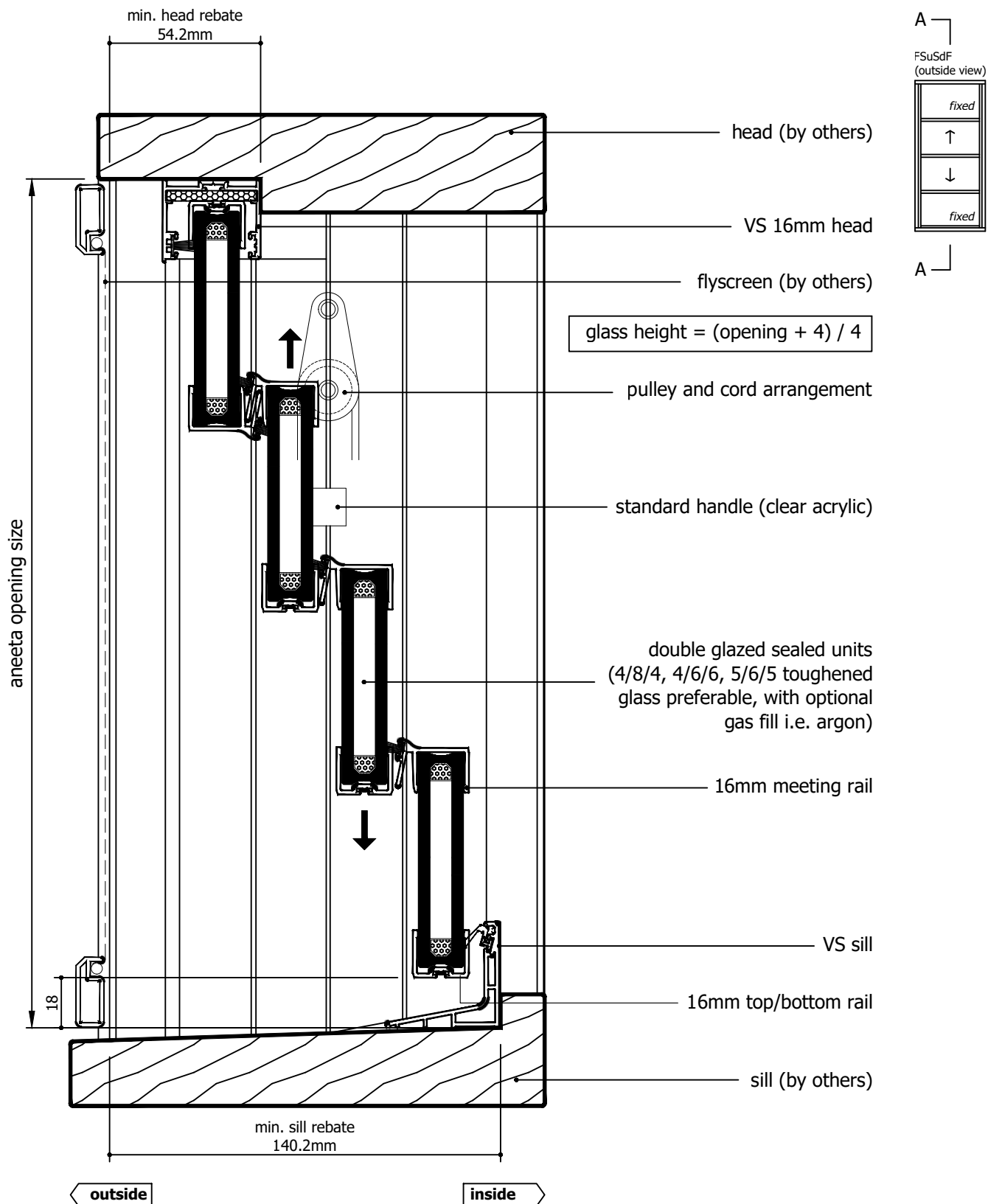
IF IN DOUBT ASK - DO NOT SCALE DRAWING




| Rev | Description | Approved By | Date |
|-----|---|-------------|-----------|
| I | 16mm flapseal option updated to QEZ48 | DF | 02/2/2026 |
| H | Delete P008 and replace with P229 - VS Sill | DF | 06/8/2025 |
| G | VS 300Pa/800Pa sill adaptor changed to VS Sill/VS HP Sill | DF | Oct2024 |
| F | Add various sill options | SE | Jun2024 |
| E | Update layout | SE | May2024 |
| D | Update lock and extension pin | SE | Dec2020 |
| C | Update sill and lock | RL | Jun2013 |

| | | | | | | | | |
|--|--|--------|---------------|---------------|---|-------------|-----------|------------------|
| <div>Proprietary and confidential</div> <div>The information contained in this drawing is the sole property of Aneeta Australia. Any reproduction in part or as a whole, without the written permission of Aneeta Australia is prohibited.</div> | Title: 4 pane 16mm double glazed INTERLOCKING sashless vertical sliders in timber frames FSuSdF with timber covers and 2 x draughtstrips at sill vertical section A-A | | | | <div></div> <div>949 Stud Road, Rowville VIC 3178, ABN 80 062 883 729</div> | | Material: | in Timber frames |
| | | | | | | | Finish: | - |
| | | | | | | | Die/Part: | - |
| | | | | | | | Dwg No: | VS 4P16 FSuSdF T |
| | Drwn: UF | Chk: - | Date: Jan2010 | Scale: 1:2@A4 | Sheet 3 of 22 | Revision: I | | |





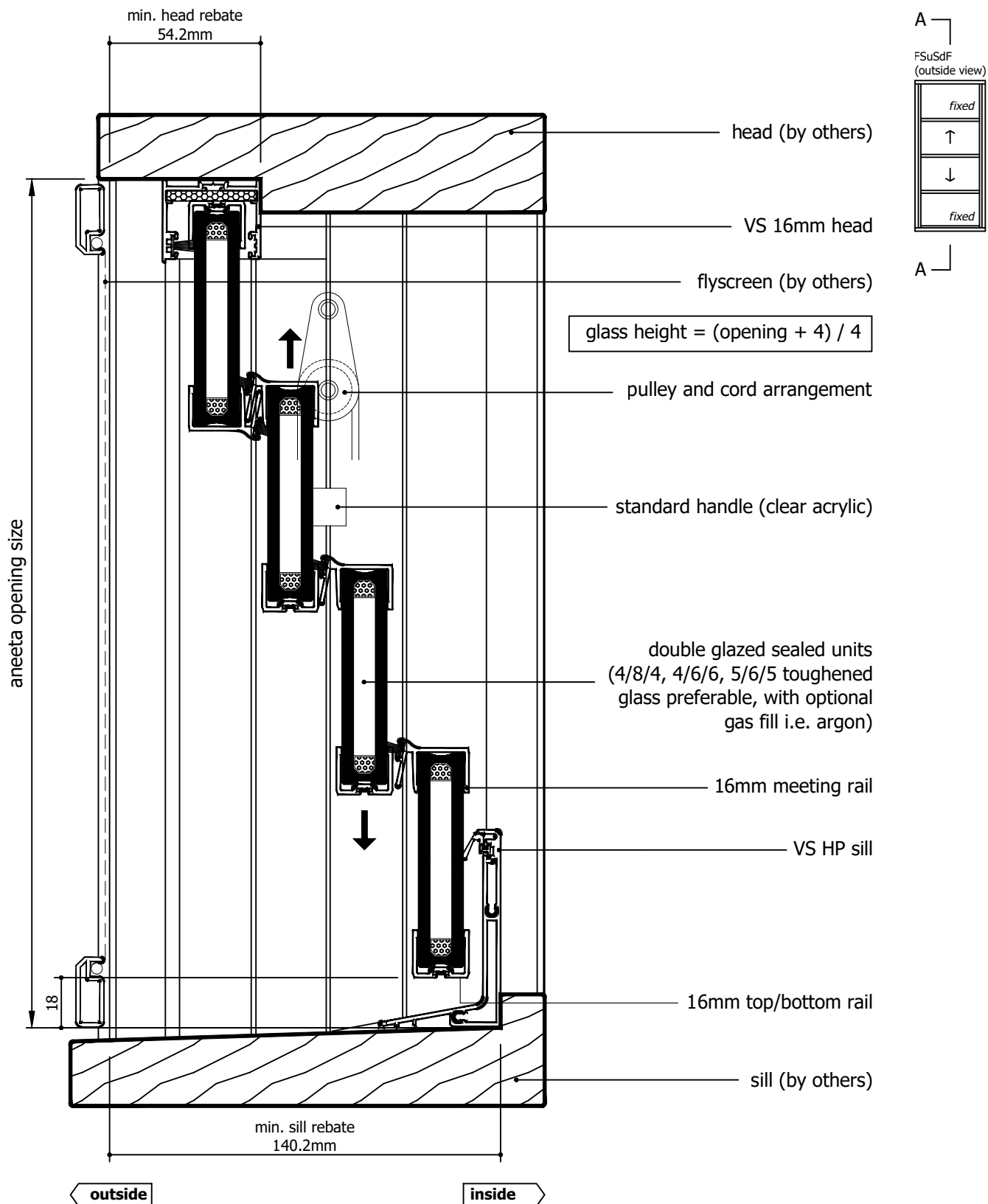
| Rev | Description | Approved By | Date |
|-----|---|----------------|-----------|
| I | 16mm flapseal option updated to QEZ48 | DF | 02/2/2026 |
| H | Delete P008 and replace with P229 - VS Sill | DF | 06/8/2025 |
| G | VS 300Pa/800Pa sill adaptor changed to VS Sill/VS HP Sill | DF | Oct2024 |
| F | Add various sill options | SE | Jun2024 |
| E | Update layout | SE | May2024 |
| D | Update lock and extension pin | SE | Dec2020 |
| C | Update sill and lock | RL | Jun2013 |

| | | | | | | | |
|--|--|--|---------------|--|--|--|-------------------------------|
| <p>Proprietary and confidential</p> <p>The information contained in this drawing is the sole property of Aneeta Australia. Any reproduction in part or as a whole, without the written permission of Aneeta Australia is prohibited.</p> | Title: 4 pane 16mm double glazed INTERLOCKING sashless vertical sliders in timber frames FSuSdF with timber covers and VS sill vertical section A-A | | | |  949 Stud Road, Rowville VIC 3178, ABN 80 062 883 729 | | Material: in Timber frames |
| | Drwn: UF | | | | | | Finish: - |
| | Chk: - | | | | | | Die/Part: - |
| | Date: Jan2010 | | | | | | Dwg No: VS 4P16 FSuSdF T |
| | Scale: 1:2@A4 | | Sheet 4 of 22 | | | | Revision: I |


M:\Documentation\Website Downloads\3. Timber Frames\1. Vertical\1. Double Hung\VS 4P16 FSuSdF T (I) - 4 pane 16mm double glazed INTERLOCKING sashless vertical sliders in timber frames FSuSdF.dwg



IF IN DOUBT ASK - DO NOT SCALE DRAWING



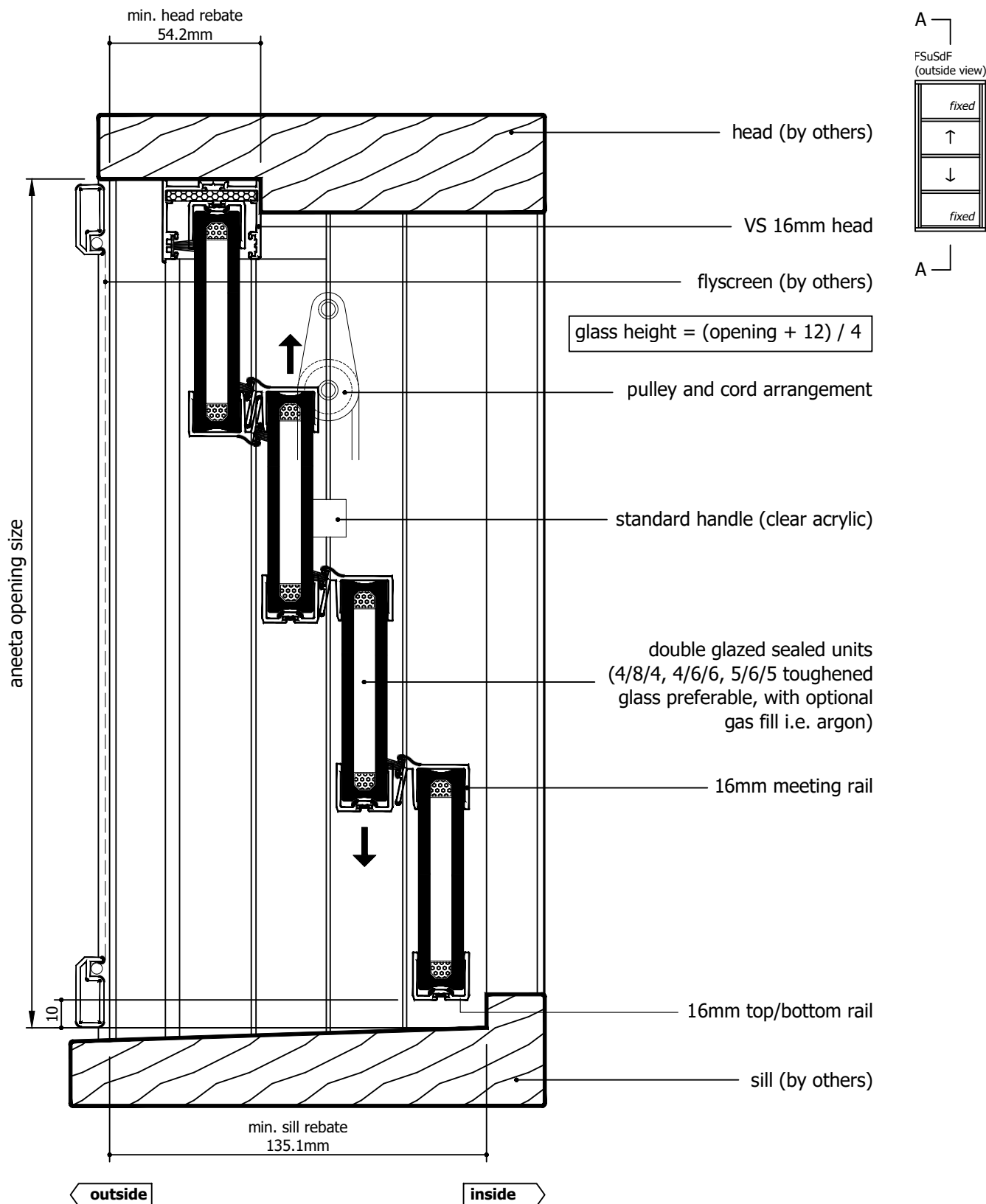
| Rev | Description | Approved By | Date |
|-----|---|-------------|-----------|
| I | 16mm flapseal option updated to QEZ48 | DF | 02/2/2026 |
| H | Delete P008 and replace with P229 - VS Sill | DF | 06/8/2025 |
| G | VS 300Pa/800Pa sill adaptor changed to VS Sill/VS HP Sill | DF | Oct2024 |
| F | Add various sill options | SE | Jun2024 |
| E | Update layout | SE | May2024 |
| D | Update lock and extension pin | SE | Dec2020 |
| C | Update sill and lock | RL | Jun2013 |

| | | | | | | | | |
|--|---|--------|---------------|---------------|--|-------------|-----------|------------------|
| <div>Proprietary and confidential</div> <div>The information contained in this drawing is the sole property of Aneeta Australia. Any reproduction in part or as a whole, without the written permission of Aneeta Australia is prohibited.</div> | <div>Title: 4 pane 16mm double glazed INTERLOCKING sashless vertical sliders in timber frames FSuSdF with timber covers and VS HP sill vertical section A-A</div> | | | | <div> 949 Stud Road, Rowville VIC 3178, ABN 80 062 883 729</div> | | Material: | in Timber frames |
| | | | | | | | Finish: | - |
| | | | | | | | Die/Part: | - |
| | | | | | | | Dwg No: | VS 4P16 FSuSdF T |
| | Drwn: UF | Chk: - | Date: Jan2010 | Scale: 1:2@A4 | Sheet 5 of 22 | Revision: I | | |

M:\Documentation\Website Downloads\3. Timber Frames\1. Vertical\1. Double Hung\VS 4P16 FSuSdF T (I) - 4 pane 16mm double glazed INTERLOCKING sashless vertical sliders in timber frames FSuSdF.dwg



IF IN DOUBT ASK - DO NOT SCALE DRAWING



| Rev | Description | Approved By | Date |
|-----|---|-------------|-----------|
| I | 16mm flapseal option updated to QEZ48 | DF | 02/2/2026 |
| H | Delete P008 and replace with P229 - VS Sill | DF | 06/8/2025 |
| G | VS 300Pa/800Pa sill adaptor changed to VS Sill/VS HP Sill | DF | Oct2024 |
| F | Add various sill options | SE | Jun2024 |
| E | Update layout | SE | May2024 |
| D | Update lock and extension pin | SE | Dec2020 |
| C | Update sill and lock | RL | Jun2013 |

Proprietary and confidential

The information contained in this drawing is the sole property of Aneeta Australia. Any reproduction in part or as a whole, without the written permission of Aneeta Australia is prohibited.

Title:
4 pane 16mm double glazed INTERLOCKING sashless vertical sliders in timber frames FSuSdF with timber covers and no sill adaptor vertical section A-A



949 Stud Road, Rowville VIC 3178, ABN 80 062 883 729

Drwn: UF Chk: - Date: Jan2010 Scale: 1:20 A4 Sheet 6 of 22 Revision: I

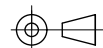
Material: in Timber frames

Finish: -

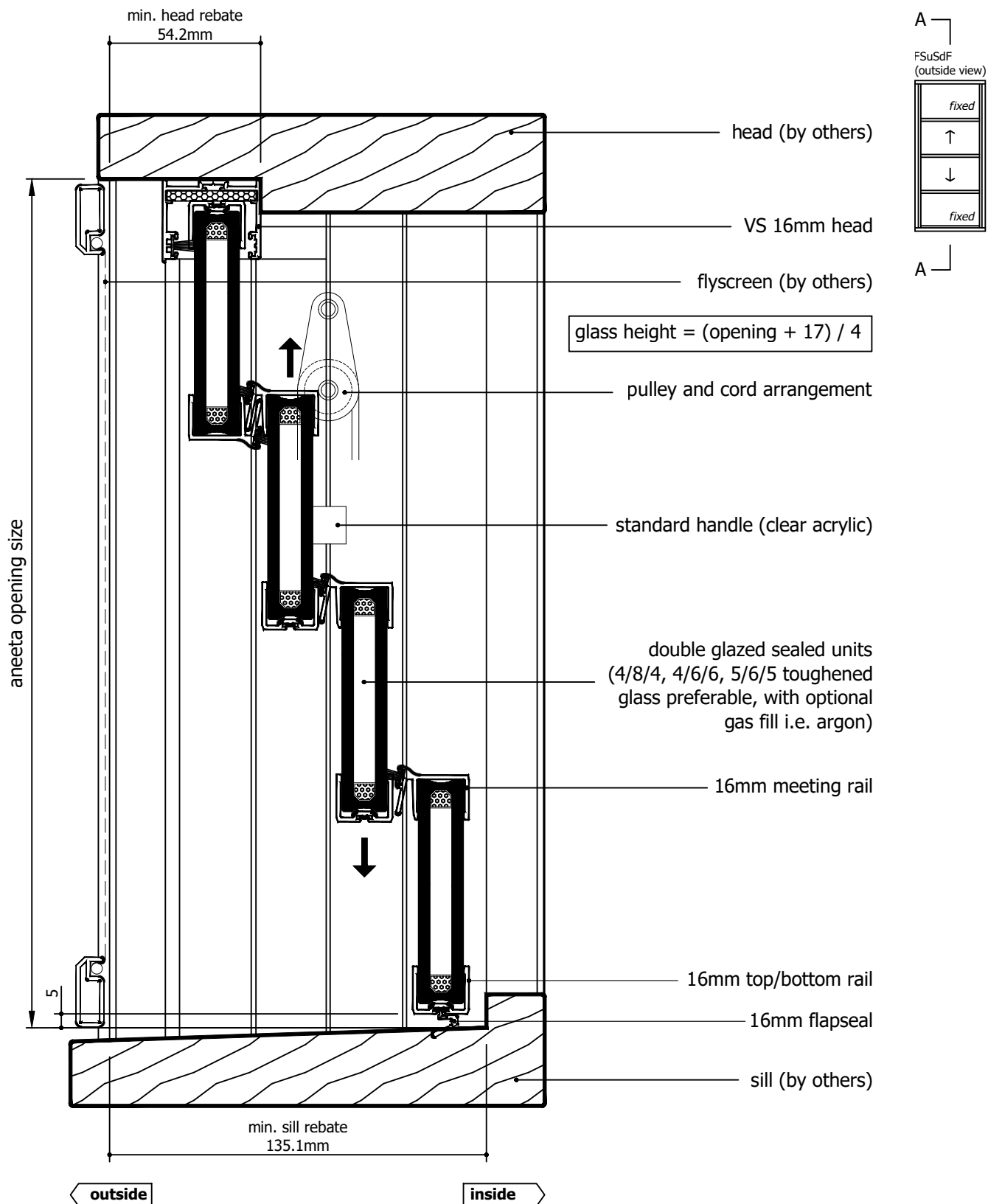
Die/Part: -

Dwg No: VS 4P16 FSuSdF T


M:\Documentation\Website Downloads\3. Timber Frames\1. Vertical\1. Double Hung\VS 4P16 FSuSdF T (I) - 4 pane 16mm double glazed INTERLOCKING sashless vertical sliders in timber frames FSuSdF.dwg



IF IN DOUBT ASK - DO NOT SCALE DRAWING



| Rev | Description | Approved By | Date |
|-----|---|-------------|-----------|
| I | 16mm flapseal option updated to QEZ48 | DF | 02/2/2026 |
| H | Delete P008 and replace with P229 - VS Sill | DF | 06/8/2025 |
| G | VS 300Pa/800Pa sill adaptor changed to VS Sill/VS HP Sill | DF | Oct2024 |
| F | Add various sill options | SE | Jun2024 |
| E | Update layout | SE | May2024 |
| D | Update lock and extension pin | SE | Dec2020 |
| C | Update sill and lock | RL | Jun2013 |

| | | | | | | |
|---|--|--|--|--|-----------|------------------|
| Proprietary and confidential The information contained in this drawing is the sole property of Aneeta Australia. Any reproduction in part or as a whole, without the written permission of Aneeta Australia is prohibited. | Title: 4 pane 16mm double glazed INTERLOCKING sashless vertical sliders in timber frames FSuSdF with timber covers and 16mm flapseal at sill vertical section A-A | |  949 Stud Road, Rowville VIC 3178, ABN 80 062 883 729 | | Material: | in Timber frames |
| | Drwn: UF | | Chk: - | | Finish: | - |
| | Date: Jan2010 | | Scale: 1:20 A4 | | Die/Part: | - |
| | Sheet 7 of 22 | | Revision: I | | Dwg No: | VS 4P16 FSuSdF T |
| | | | | | | |



glass width = opening - 40mm

aneeta opening size

flyscreen (optional by others)

timber cover outside (optional)

16mm combination tee

top pane

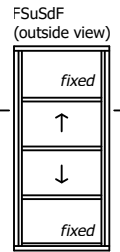
bottom pane

timber cover

lock

16mm multipane tee

jamb (by others)




outside

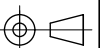
inside

155mm
frame depth min 160mm

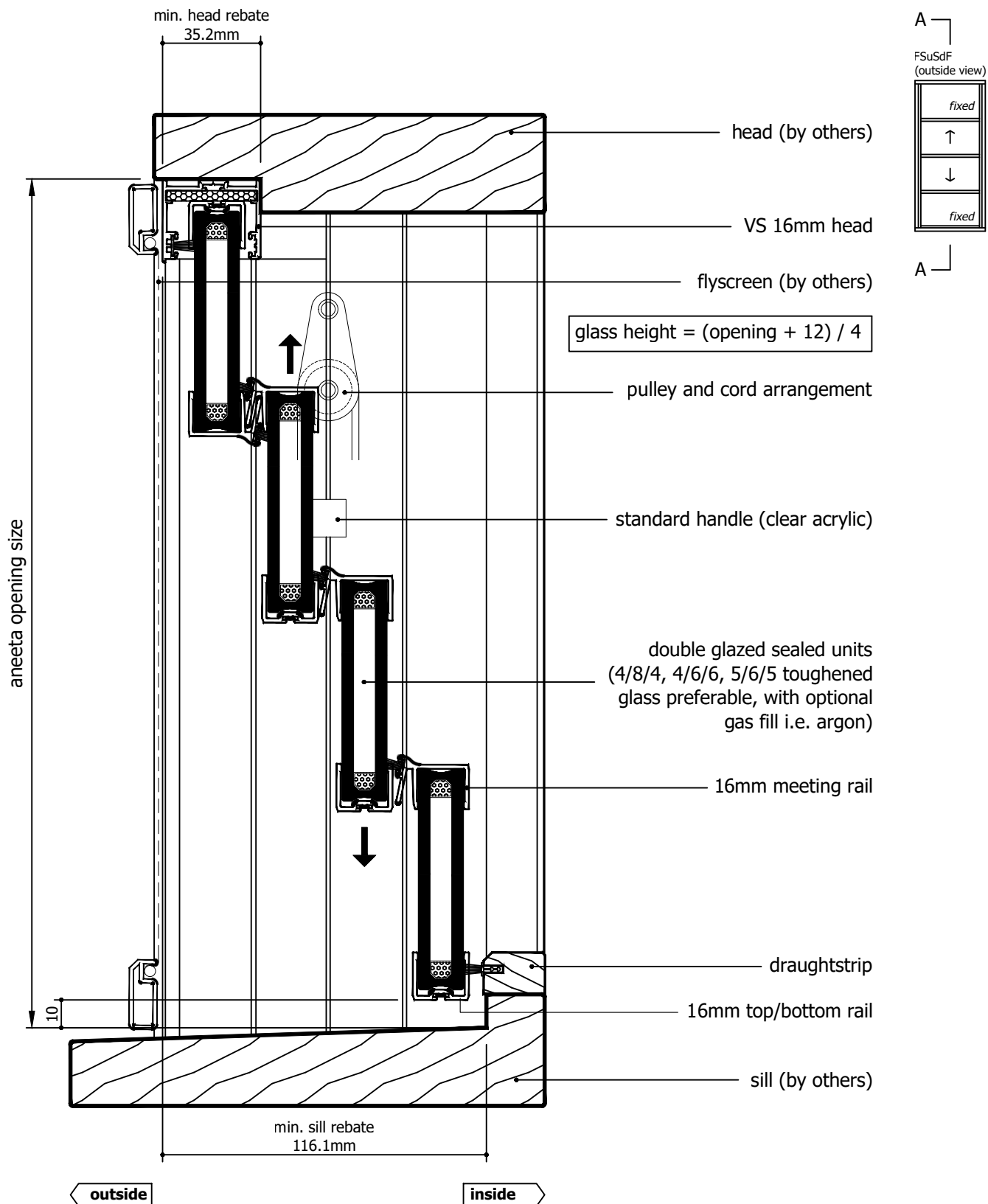
| Rev | Description | Approved By | Date |
|-----|---|-------------|-----------|
| I | 16mm flapseal option updated to QEZ48 | DF | 02/2/2026 |
| H | Delete P008 and replace with P229 - VS Sill | DF | 06/8/2025 |
| G | VS 300Pa/800Pa sill adaptor changed to VS Sill/VS HP Sill | DF | Oct2024 |
| F | Add various sill options | SE | Jun2024 |
| E | Update layout | SE | May2024 |
| D | Update lock and extension pin | SE | Dec2020 |
| C | Update sill and lock | RL | Jun2013 |

| | | | | | | | |
|--|---|--------|---------------|---------------|--|-------------|-------------------------------|
| <div>Proprietary and confidential</div> <div>The information contained in this drawing is the sole property of Aneeta Australia. Any reproduction in part or as a whole, without the written permission of Aneeta Australia is prohibited.</div> | Title: 4 pane 16mm double glazed INTERLOCKING sashless vertical sliders in timber frames FSuSdF with timber covers | | | | <div> 949 Stud Road, Rowville VIC 3178, ABN 80 062 883 729</div> | | Material: in Timber frames |
| | horizontal section B-B | | | | | | Finish: - |
| | Drwn: UF | Chk: - | Date: Jan2010 | Scale: 1:1@A4 | Sheet 8 of 22 | Revision: I | Die/Part: - |
| | | | | | | | Dwg No: VS 4P16 FSuSdF T |
| | | | | | | | |


M:\Documentation\Website Downloads\3. Timber Frames\1. Vertical\1. Double Hung\VS 4P16 FSuSdF T (I) - 4 pane 16mm double glazed INTERLOCKING sashless vertical sliders in timber frames FSuSdF.dwg



IF IN DOUBT ASK - DO NOT SCALE DRAWING



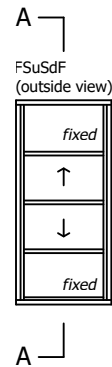
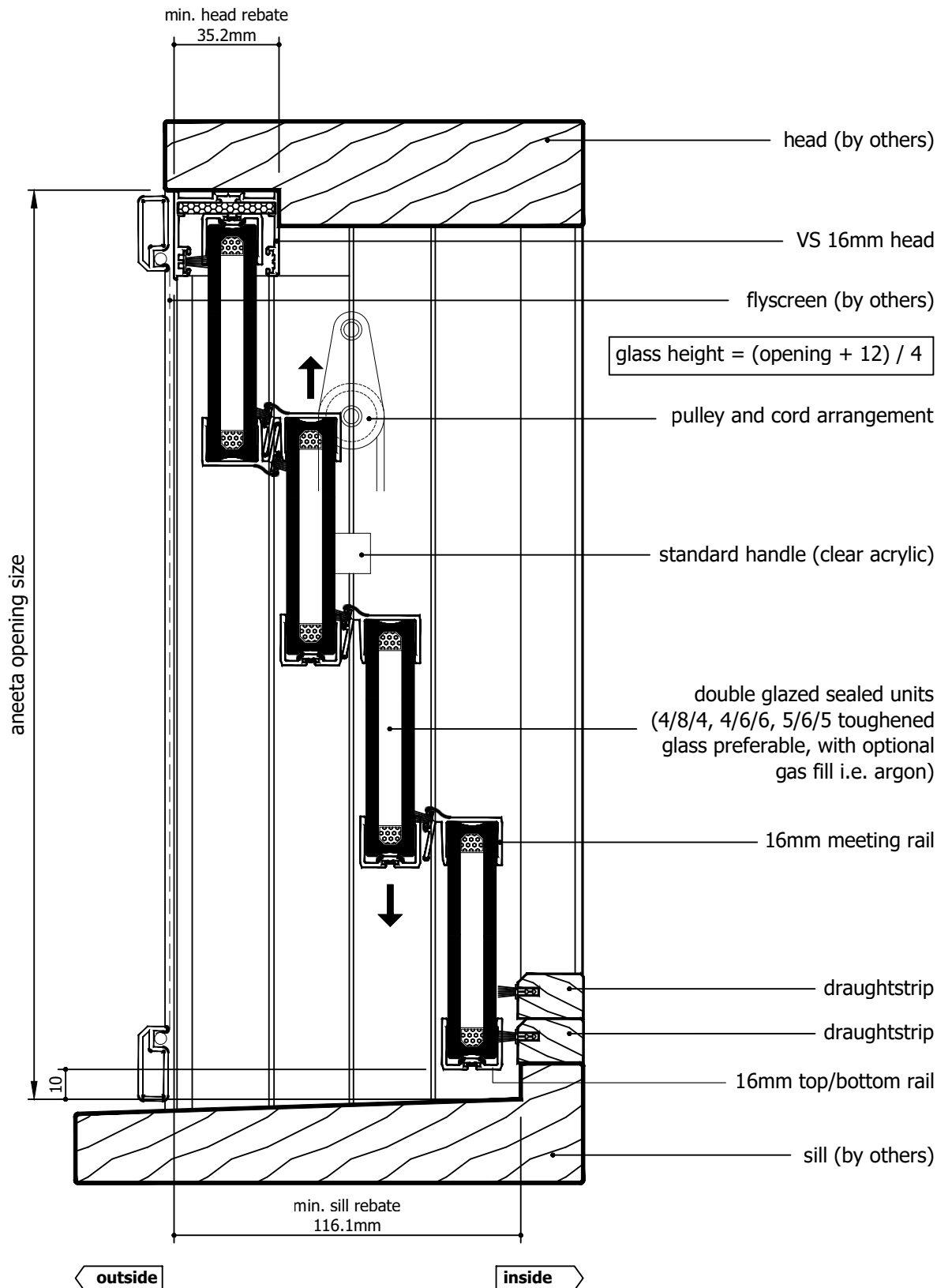
| Rev | Description | Approved By | Date |
|-----|---|-------------|-----------|
| I | 16mm flapseal option updated to QEZ48 | DF | 02/2/2026 |
| H | Delete P008 and replace with P229 - VS Sill | DF | 06/8/2025 |
| G | VS 300Pa/800Pa sill adaptor changed to VS Sill/VS HP Sill | DF | Oct2024 |
| F | Add various sill options | SE | Jun2024 |
| E | Update layout | SE | May2024 |
| D | Update lock and extension pin | SE | Dec2020 |
| C | Update sill and lock | RL | Jun2013 |

| | | | | | | |
|---|--|--|--|--|-----------|------------------|
| Proprietary and confidential The information contained in this drawing is the sole property of Aneeta Australia. Any reproduction in part or as a whole, without the written permission of Aneeta Australia is prohibited. | Title: 4 pane 16mm double glazed INTERLOCKING sashless vertical sliders in timber frames FSuSdF with aluminium covers outside, timber covers inside, and draughtstrips at sill vertical section A-A | |  949 Stud Road, Rowville VIC 3178, ABN 80 062 883 729 | | Material: | in Timber frames |
| | Drwn: UF | | Sheet 9 of 22 | | Finish: | - |
| | Chk: - | | Revision: I | | Die/Part: | - |
| | Date: Jan2010 | | Scale: 1:2@A4 | | Dwg No: | VS 4P16 FSuSdF T |
| | Date: Jan2010 | | Scale: 1:2@A4 | | | |


M:\Documentation\Website Downloads\3. Timber Frames\1. Vertical\1. Double Hung\VS 4P16 FSuSdF T (I) - 4 pane 16mm double glazed INTERLOCKING sashless vertical sliders in timber frames FSuSdF.dwg



IF IN DOUBT ASK - DO NOT SCALE DRAWING



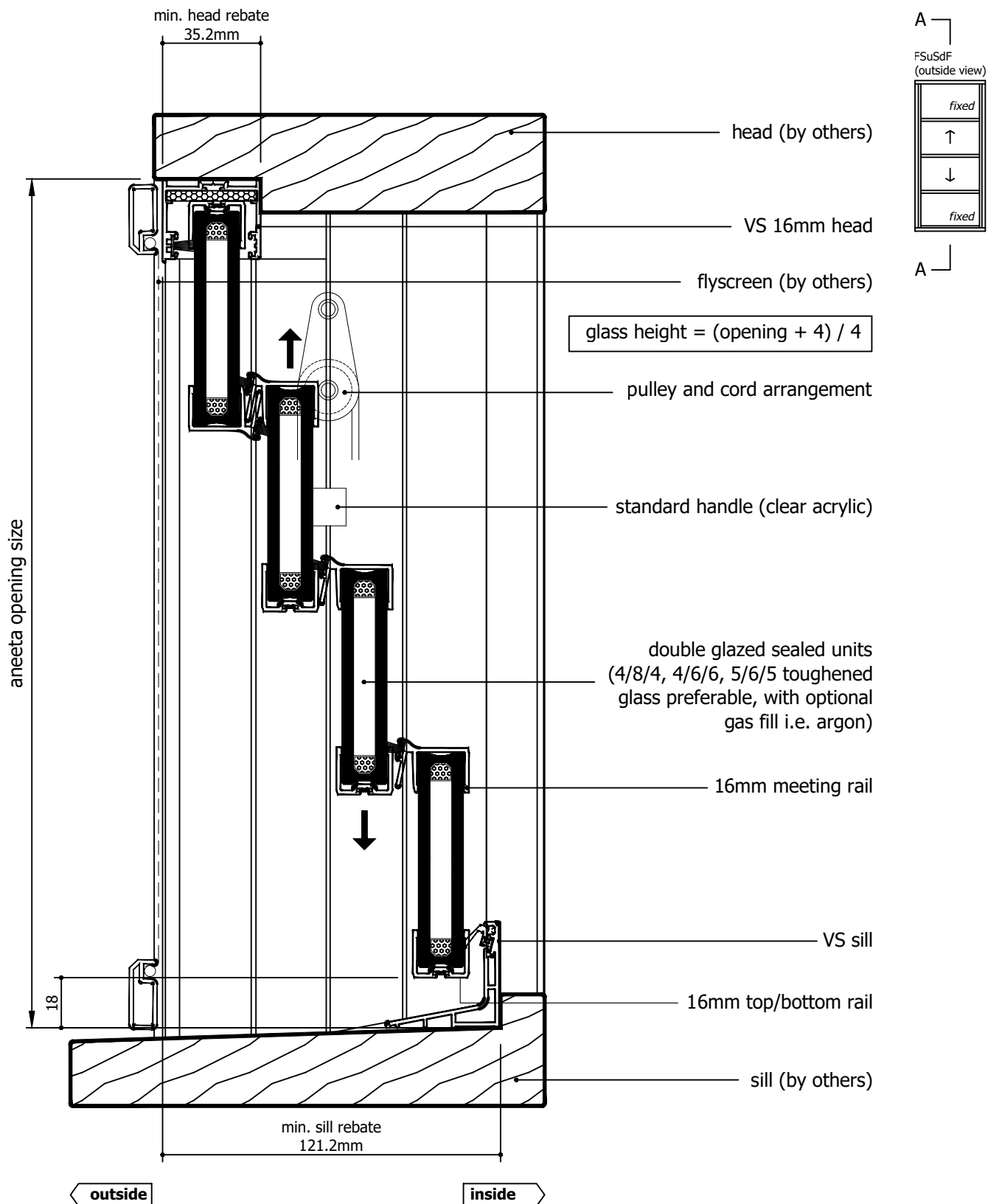
| Rev | Description | Approved By | Date |
|-----|---|-------------|-----------|
| I | 16mm flapseal option updated to QEZ48 | DF | 02/2/2026 |
| H | Delete P008 and replace with P229 - VS Sill | DF | 06/8/2025 |
| G | VS 300Pa/800Pa sill adaptor changed to VS Sill/VS HP Sill | DF | Oct2024 |
| F | Add various sill options | SE | Jun2024 |
| E | Update layout | SE | May2024 |
| D | Update lock and extension pin | SE | Dec2020 |
| C | Update sill and lock | RL | Jun2013 |

| | | | | | | | |
|--|--|--------|---------------|---------------|--|-------------|-------------------------------|
| <div>Proprietary and confidential</div> <div>The information contained in this drawing is the sole property of Aneeta Australia. Any reproduction in part or as a whole, without the written permission of Aneeta Australia is prohibited.</div> | Title: 4 pane 16mm double glazed INTERLOCKING sashless vertical sliders in timber frames FSuSdF with aluminium covers outside, timber covers inside, and 2 x draughtstrips at sill vertical section A-A | | | | <div> 949 Stud Road, Rowville VIC 3178, ABN 80 062 883 729</div> | | Material: in Timber frames |
| | | | | | | | Finish: - |
| | | | | | | | Die/Part: - |
| | | | | | | | Dwg No: VS 4P16 FSuSdF T |
| | Drwn: UF | Chk: - | Date: Jan2010 | Scale: 1:2@A4 | Sheet 10 of 22 | Revision: I | |


M:\Documentation\Website Downloads\3. Timber Frames\1. Vertical\1. Double Hung\VS 4P16 FSuSdF T (I) - 4 pane 16mm double glazed INTERLOCKING sashless vertical sliders in timber frames FSuSdF.dwg



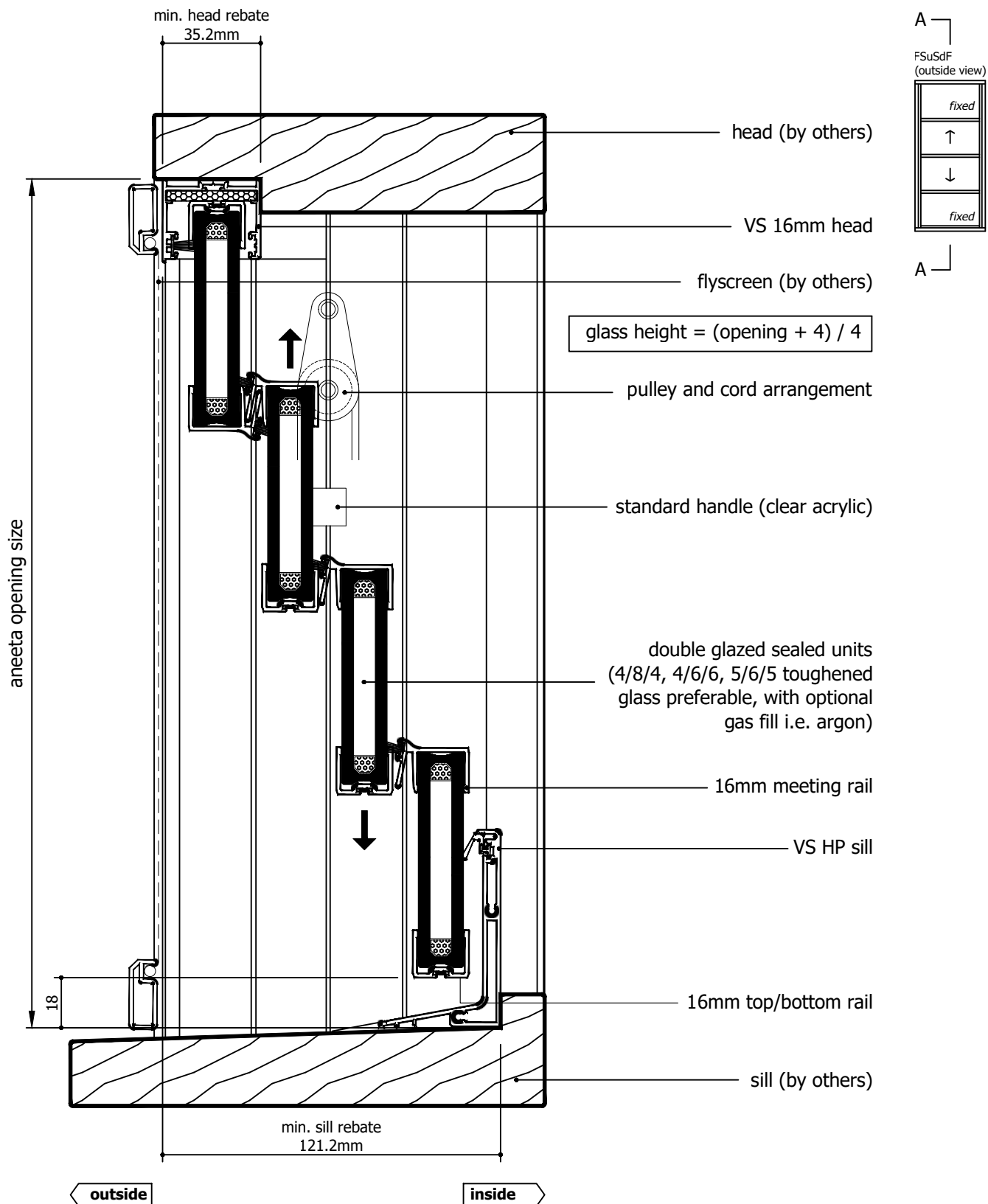
IF IN DOUBT ASK - DO NOT SCALE DRAWING




| Rev | Description | Approved By | Date |
|-----|---|-------------|-----------|
| I | 16mm flapseal option updated to QEZ48 | DF | 02/2/2026 |
| H | Delete P008 and replace with P229 - VS Sill | DF | 06/8/2025 |
| G | VS 300Pa/800Pa sill adaptor changed to VS Sill/VS HP Sill | DF | Oct2024 |
| F | Add various sill options | SE | Jun2024 |
| E | Update layout | SE | May2024 |
| D | Update lock and extension pin | SE | Dec2020 |
| C | Update sill and lock | RL | Jun2013 |

| | | | | | | |
|---|--|--|--|--|-----------|------------------|
| Proprietary and confidential The information contained in this drawing is the sole property of Aneeta Australia. Any reproduction in part or as a whole, without the written permission of Aneeta Australia is prohibited. | Title: 4 pane 16mm double glazed INTERLOCKING sashless vertical sliders in timber frames FSuSdF with aluminium covers outside, timber covers inside, and VS sill vertical section A-A | |  949 Stud Road, Rowville VIC 3178, ABN 80 062 883 729 | | Material: | in Timber frames |
| | Drwn: UF | | Sheet 11 of 22 | | Finish: | - |
| | Date: Jan2010 | | Scale: 1:20 A4 | | Die/Part: | - |
| | Date: Jan2010 | | Scale: 1:20 A4 | | Dwg No: | VS 4P16 FSuSdF T |
| | Date: Jan2010 | | Scale: 1:20 A4 | | Revision: | I |

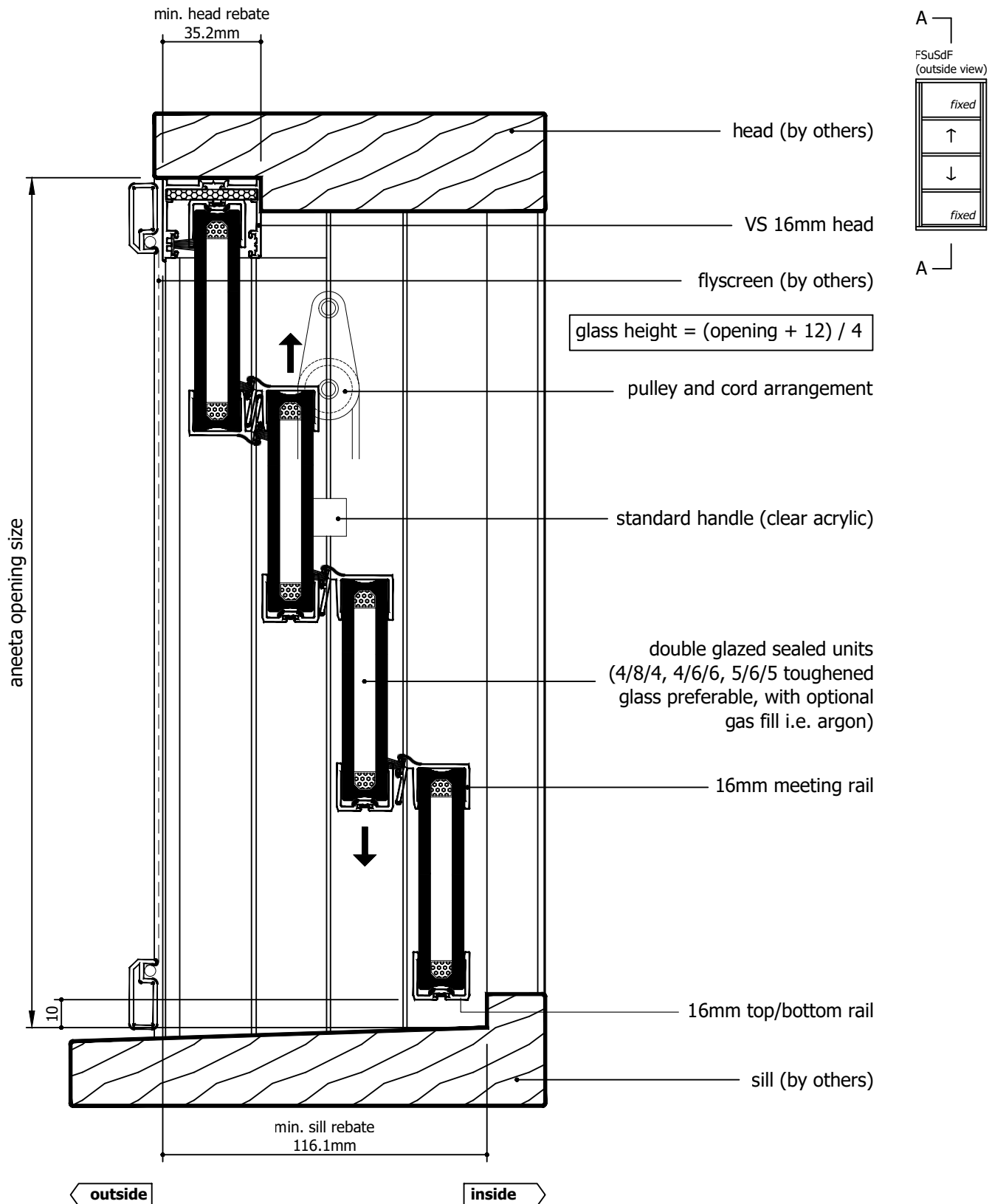





| Rev | Description | Approved By | Date |
|-----|---|-------------|-----------|
| I | 16mm flapseal option updated to QEZ48 | DF | 02/2/2026 |
| H | Delete P008 and replace with P229 - VS Sill | DF | 06/8/2025 |
| G | VS 300Pa/800Pa sill adaptor changed to VS Sill/VS HP Sill | DF | Oct2024 |
| F | Add various sill options | SE | Jun2024 |
| E | Update layout | SE | May2024 |
| D | Update lock and extension pin | SE | Dec2020 |
| C | Update sill and lock | RL | Jun2013 |

| | | | | | | |
|---|---|--|--|--|-----------|------------------|
| Proprietary and confidential The information contained in this drawing is the sole property of Aneeta Australia. Any reproduction in part or as a whole, without the written permission of Aneeta Australia is prohibited. | Title: 4 pane 16mm double glazed INTERLOCKING sashless vertical sliders in timber frames FSuSdF with aluminium covers outside, timber covers inside, and VS HP sill vertical section A-A | |  949 Stud Road, Rowville VIC 3178, ABN 80 062 883 729 | | Material: | in Timber frames |
| | Drwn: UF | | Sheet 12 of 22 | | Finish: | - |
| | Date: Jan2010 | | Scale: 1:20 A4 | | Die/Part: | - |
| | Date: Jan2010 | | Scale: 1:20 A4 | | Dwg No: | VS 4P16 FSuSdF T |
| | Date: Jan2010 | | Scale: 1:20 A4 | | Revision: | I |

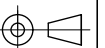




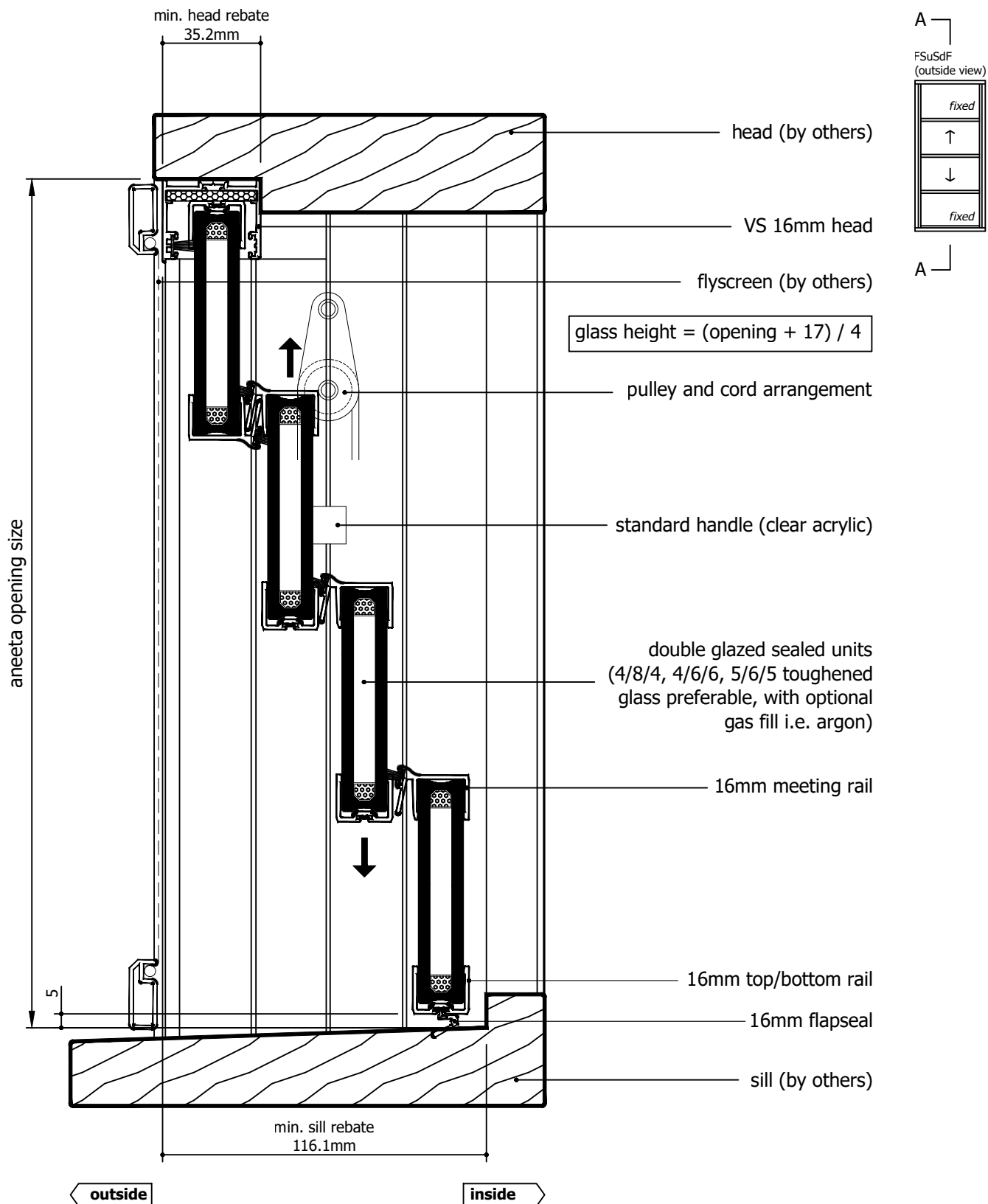
| Rev | Description | Approved By | Date |
|-----|---|-------------|-----------|
| I | 16mm flapseal option updated to QEZ48 | DF | 02/2/2026 |
| H | Delete P008 and replace with P229 - VS Sill | DF | 06/8/2025 |
| G | VS 300Pa/800Pa sill adaptor changed to VS Sill/VS HP Sill | DF | Oct2024 |
| F | Add various sill options | SE | Jun2024 |
| E | Update layout | SE | May2024 |
| D | Update lock and extension pin | SE | Dec2020 |
| C | Update sill and lock | RL | Jun2013 |

| | | | | | | |
|---|--|--|--|--|----------------------------|--|
| Proprietary and confidential The information contained in this drawing is the sole property of Aneeta Australia. Any reproduction in part or as a whole, without the written permission of Aneeta Australia is prohibited. | Title: 4 pane 16mm double glazed INTERLOCKING sashless vertical sliders in timber frames FSuSdF with aluminium covers outside, timber covers inside, and no sill adaptor vertical section A-A | | | | Material: in Timber frames | |
| |  949 Stud Road, Rowville VIC 3178, ABN 80 062 883 729 | | | | Finish: - | |
| | Drwn: UF Chk: - Date: Jan2010 Scale: 1:20A4 Sheet 13 of 22 Revision: I | | | | Die/Part: - | |
| | | | | | Dwg No: VS 4P16 FSuSdF T | |
| | | | | | | |


M:\Documentation\Website Downloads\3. Timber Frames\1. Vertical\1. Double Hung\VS 4P16 FSuSdF T (I) - 4 pane 16mm double glazed INTERLOCKING sashless vertical sliders in timber frames FSuSdF.dwg



IF IN DOUBT ASK - DO NOT SCALE DRAWING



| Rev | Description | Approved By | Date |
|-----|---|-------------|-----------|
| I | 16mm flapseal option updated to QEZ48 | DF | 02/2/2026 |
| H | Delete P008 and replace with P229 - VS Sill | DF | 06/8/2025 |
| G | VS 300Pa/800Pa sill adaptor changed to VS Sill/VS HP Sill | DF | Oct2024 |
| F | Add various sill options | SE | Jun2024 |
| E | Update layout | SE | May2024 |
| D | Update lock and extension pin | SE | Dec2020 |
| C | Update sill and lock | RL | Jun2013 |

| | | | | | | | |
|---|--|--|--|--|--|-----------|------------------|
| Proprietary and confidential The information contained in this drawing is the sole property of Aneeta Australia. Any reproduction in part or as a whole, without the written permission of Aneeta Australia is prohibited. | Title: 4 pane 16mm double glazed INTERLOCKING sashless vertical sliders in timber frames FSuSdF with aluminium covers outside, timber covers inside, and 16mm flapseal at sill vertical section A-A | | |  949 Stud Road, Rowville VIC 3178, ABN 80 062 883 729 | | Material: | in Timber frames |
| | Drwn: UF | | | Sheet 14 of 22 | | Finish: | - |
| | Chk: - | | | Revision: I | | Die/Part: | - |
| | Date: Jan2010 | | | Scale: 1:20 A4 | | Dwg No: | VS 4P16 FSuSdF T |
| | | | | | | | |

M:\Documentation\Website Downloads\3. Timber Frames\1. Vertical\1. Double Hung\VS 4P16 FSuSdF T (I) - 4 pane 16mm double glazed INTERLOCKING sashless vertical sliders in timber frames FSuSdF.dwg



IF IN DOUBT ASK - DO NOT SCALE DRAWING

glass width = opening - 40mm

aneeta opening size

flyscreen (optional by others)

16mm combination tee

top pane

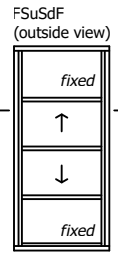
bottom pane

timber cover

lock

16mm multipane tee

jamb (by others)




outside

inside

135mm
frame depth min 140mm

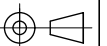
| Rev | Description | Approved By | Date |
|-----|---|-------------|-----------|
| I | 16mm flapseal option updated to QEZ48 | DF | 02/2/2026 |
| H | Delete P008 and replace with P229 - VS Sill | DF | 06/8/2025 |
| G | VS 300Pa/800Pa sill adaptor changed to VS Sill/VS HP Sill | DF | Oct2024 |
| F | Add various sill options | SE | Jun2024 |
| E | Update layout | SE | May2024 |
| D | Update lock and extension pin | SE | Dec2020 |
| C | Update sill and lock | RL | Jun2013 |

| | | | |
|---|--|--------|---------------|
| Proprietary and confidential The information contained in this drawing is the sole property of Aneeta Australia. Any reproduction in part or as a whole, without the written permission of Aneeta Australia is prohibited. | Title: 4 pane 16mm double glazed INTERLOCKING sashless vertical sliders in timber frames FSuSdF with aluminium covers outside, timber covers inside horizontal section B-B | | |
| | Drwn: UF | Chk: - | Date: Jan2010 |

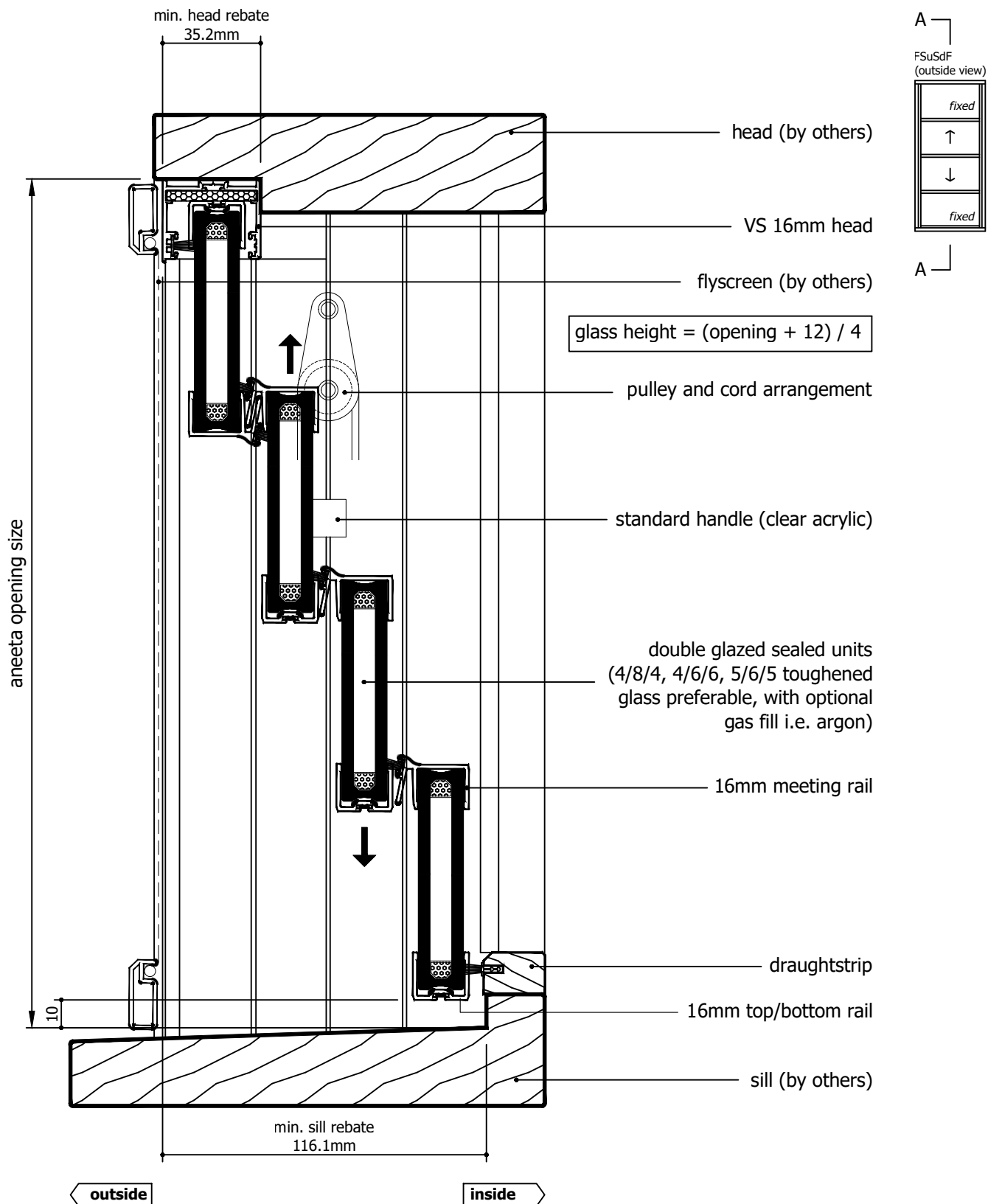
| | |
|--|-------------|
|  949 Stud Road, Rowville VIC 3178, ABN 80 062 883 729 | |
| Sheet 15 of 22 | Revision: I |

| | |
|-----------|------------------|
| Material: | in Timber frames |
| Finish: | - |
| Die/Part: | - |
| Dwg No: | VS 4P16 FSuSdF T |


M:\Documentation\Website Downloads\3. Timber Frames\1. Vertical\1. Double Hung\VS 4P16 FSuSdF T (I) - 4 pane 16mm double glazed INTERLOCKING sashless vertical sliders in timber frames FSuSdF.dwg



IF IN DOUBT ASK - DO NOT SCALE DRAWING



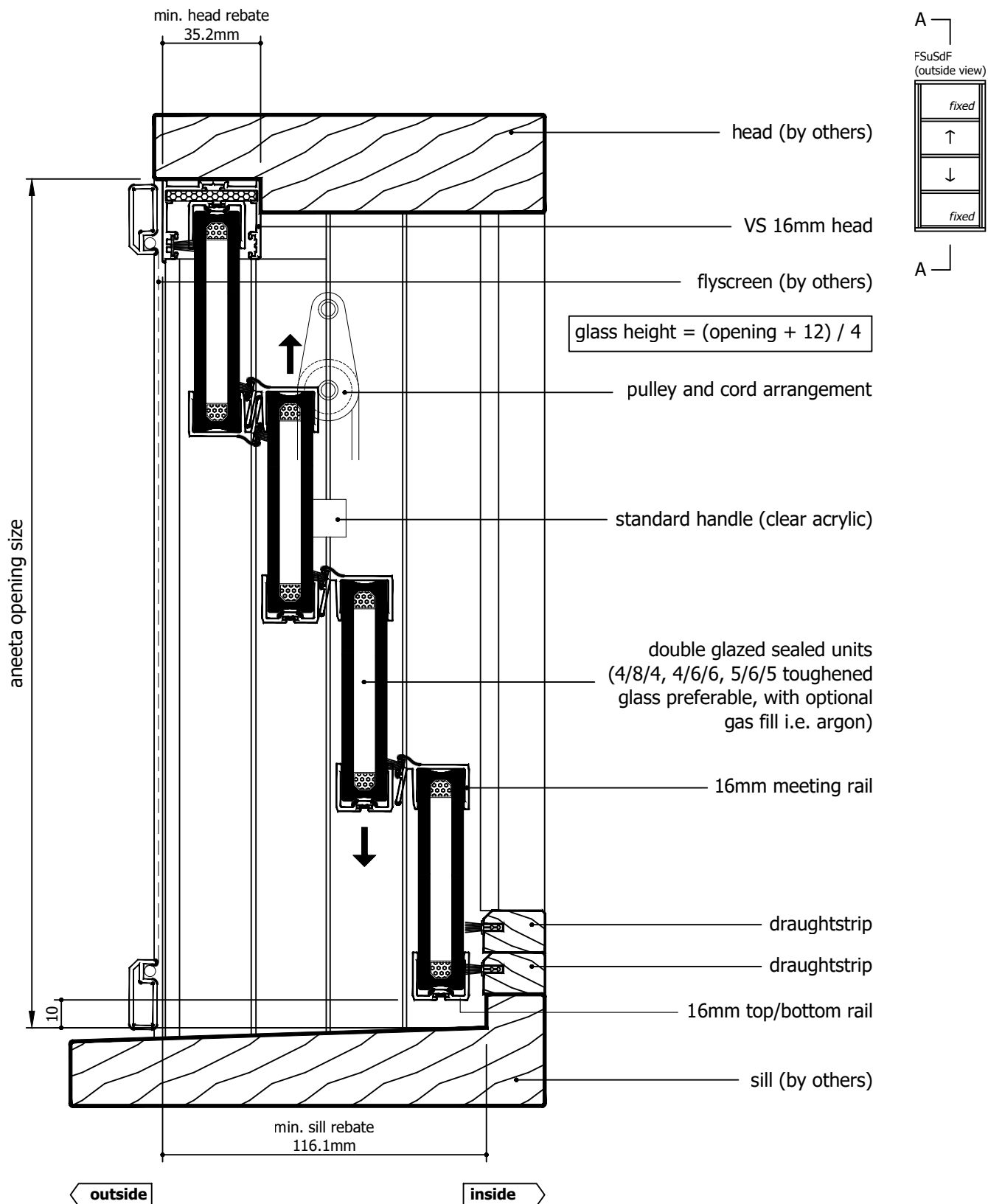
| Rev | Description | Approved By | Date |
|-----|---|-------------|-----------|
| I | 16mm flapseal option updated to QEZ48 | DF | 02/2/2026 |
| H | Delete P008 and replace with P229 - VS Sill | DF | 26/8/2025 |
| G | VS 300Pa/800Pa sill adaptor changed to VS Sill/VS HP Sill | DF | Oct2024 |
| F | Add various sill options | SE | Jun2024 |
| E | Update layout | SE | May2024 |
| D | Update lock and extension pin | SE | Dec2020 |
| C | Update sill and lock | RL | Jun2013 |

| | | | | | | | |
|--|--|---------------|----------------------|----------------------|--|--------------------|---------------------------------------|
| <p>Proprietary and confidential</p> <p>The information contained in this drawing is the sole property of Aneeta Australia. Any reproduction in part or as a whole, without the written permission of Aneeta Australia is prohibited.</p> | <p>Title: 4 pane 16mm double glazed INTERLOCKING sashless vertical sliders in timber frames FSuSdF with aluminium covers, and draughtstrips at sill vertical section A-A</p> | | | |  949 Stud Road, Rowville VIC 3178, ABN 80 062 883 729 | | <p>Material: in Timber frames</p> |
| | | | | | | | <p>Finish: -</p> |
| | | | | | | | <p>Die/Part: -</p> |
| | | | | | | | <p>Dwg No: VS 4P16 FSuSdF T</p> |
| | <p>Drwn: UF</p> | <p>Chk: -</p> | <p>Date: Jan2010</p> | <p>Scale: 1:2@A4</p> | <p>Sheet 16 of 22</p> | <p>Revision: I</p> | |


M:\Documentation\Website Downloads\3. Timber Frames\1. Vertical\1. Double Hung\VS 4P16 FSuSdF T (I) - 4 pane 16mm double glazed INTERLOCKING sashless vertical sliders in timber frames FSuSdF.dwg



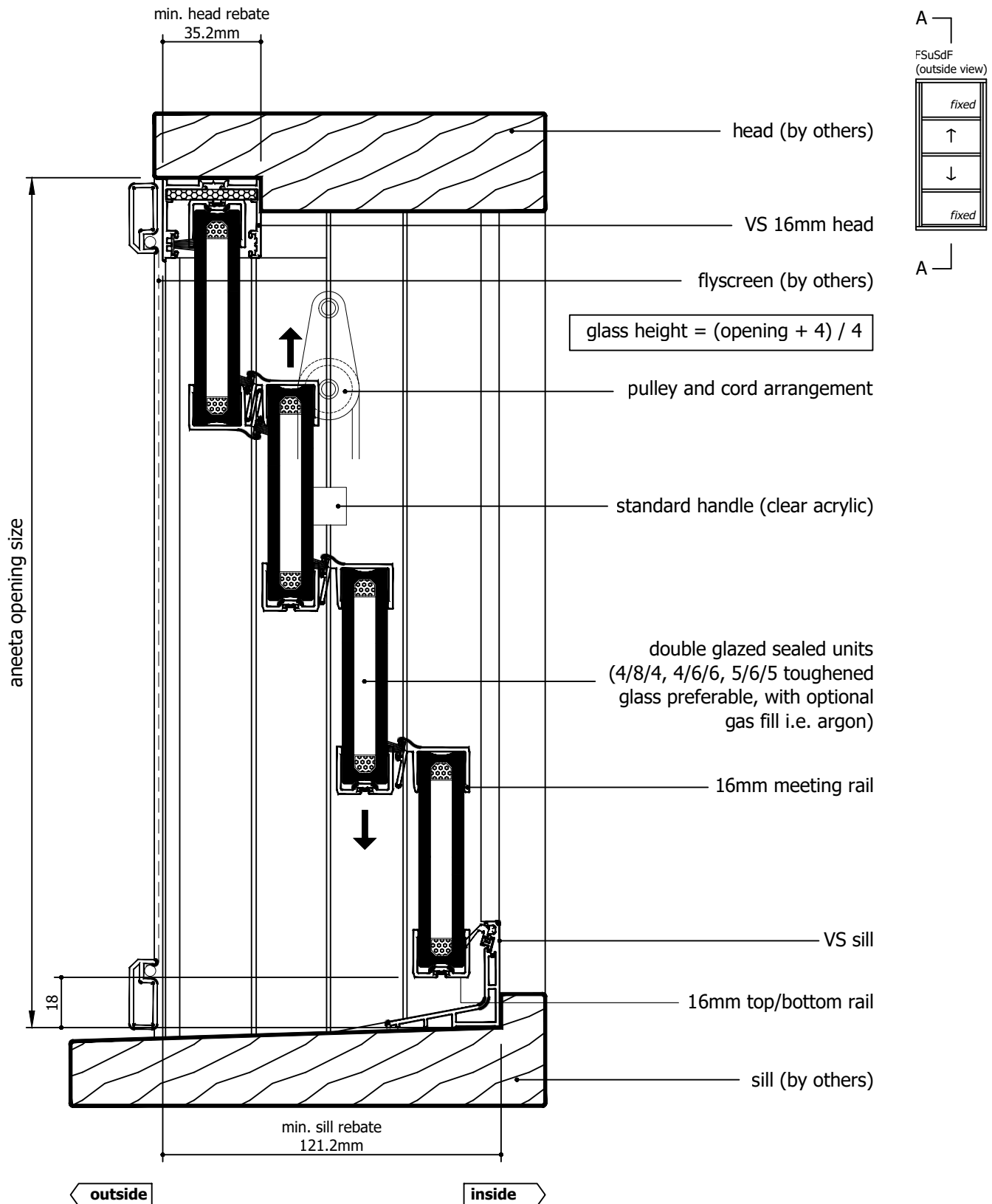
IF IN DOUBT ASK - DO NOT SCALE DRAWING




| Rev | Description | Approved By | Date |
|-----|---|-------------|-----------|
| I | 16mm flapseal option updated to QEZ48 | DF | 02/2/2026 |
| H | Delete P008 and replace with P229 - VS Sill | DF | 06/8/2025 |
| G | VS 300Pa/800Pa sill adaptor changed to VS Sill/VS HP Sill | DF | Oct2024 |
| F | Add various sill options | SE | Jun2024 |
| E | Update layout | SE | May2024 |
| D | Update lock and extension pin | SE | Dec2020 |
| C | Update sill and lock | RL | Jun2013 |

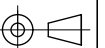
| | | | | | | | |
|--|---|--------|---------------|---------------|--|-------------|---------------------------------------|
| <p>Proprietary and confidential</p> <p>The information contained in this drawing is the sole property of Aneeta Australia. Any reproduction in part or as a whole, without the written permission of Aneeta Australia is prohibited.</p> | <p>Title: 4 pane 16mm double glazed INTERLOCKING sashless vertical sliders in timber frames FSuSdF with aluminium covers and 2 x draughtstrips at sill vertical section A-A</p> | | | |  949 Stud Road, Rowville VIC 3178, ABN 80 062 883 729 | | <p>Material: in Timber frames</p> |
| | | | | | | | <p>Finish: -</p> |
| | | | | | | | <p>Die/Part: -</p> |
| | | | | | | | <p>Dwg No: VS 4P16 FSuSdF T</p> |
| | Drwn: UF | Chk: - | Date: Jan2010 | Scale: 1:2@A4 | Sheet 17 of 22 | Revision: I | |

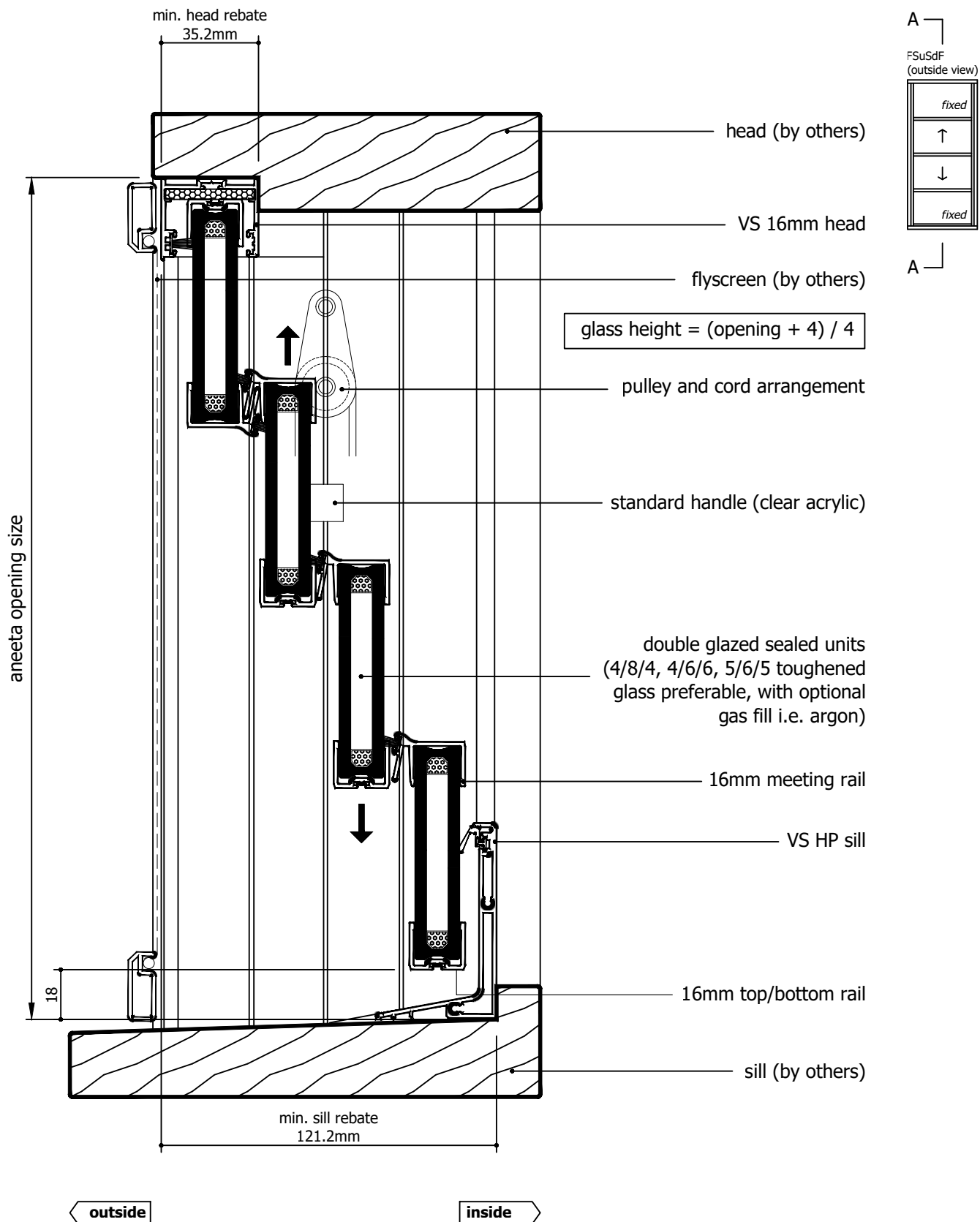





| Rev | Description | Approved By | Date |
|-----|---|-------------|-----------|
| I | 16mm flapseal option updated to QEZ48 | DF | 02/2/2026 |
| H | Delete P008 and replace with P229 - VS Sill | DF | 06/8/2025 |
| G | VS 300Pa/800Pa sill adaptor changed to VS Sill/VS HP Sill | DF | Oct2024 |
| F | Add various sill options | SE | Jun2024 |
| E | Update layout | SE | May2024 |
| D | Update lock and extension pin | SE | Dec2020 |
| C | Update sill and lock | RL | Jun2013 |

| | | | | | | | |
|--|---|--------|---------------|---------------|--|-------------|-------------------------------|
| <div>Proprietary and confidential</div> <div>The information contained in this drawing is the sole property of Aneeta Australia. Any reproduction in part or as a whole, without the written permission of Aneeta Australia is prohibited.</div> | Title: 4 pane 16mm double glazed INTERLOCKING sashless vertical sliders in timber frames FSuSdF with aluminium covers and VS sill vertical section A-A | | | | <div> 949 Stud Road, Rowville VIC 3178, ABN 80 062 883 729</div> | | Material: in Timber frames |
| | | | | | | | Finish: - |
| | | | | | | | Die/Part: - |
| | | | | | | | Dwg No: VS 4P16 FSuSdF T |
| | Drwn: UF | Chk: - | Date: Jan2010 | Scale: 1:2@A4 | Sheet 18 of 22 | Revision: I | |





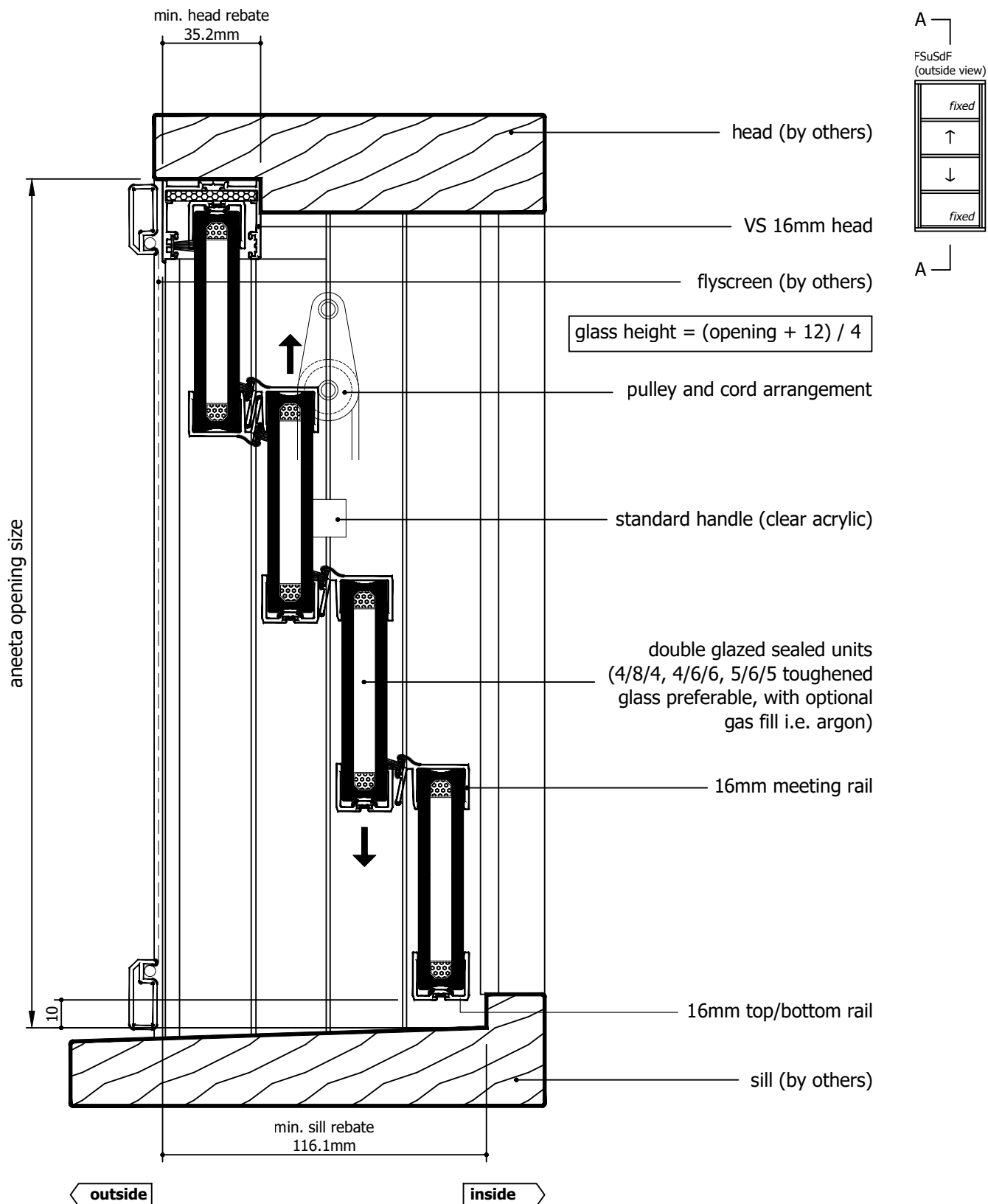
| Rev | Description | Approved By | Date |
|-----|---|-------------|-----------|
| I | 16mm flapseal option updated to QEZ48 | DF | 02/2/2026 |
| H | Delete P008 and replace with P229 - VS Sill | DF | 06/8/2025 |
| G | VS 300Pa/800Pa sill adaptor changed to VS Sill/VS HP Sill | DF | Oct2024 |
| F | Add various sill options | SE | Jun2024 |
| E | Update layout | SE | May2024 |
| D | Update lock and extension pin | SE | Dec2020 |
| C | Update sill and lock | RL | Jun2013 |

| | | | | | | | |
|--|--|--------|---------------|---------------|--|-------------|------------------|
| <div>Proprietary and confidential</div> <div>The information contained in this drawing is the sole property of Aneeta Australia. Any reproduction in part or as a whole, without the written permission of Aneeta Australia is prohibited.</div> | Title: 4 pane 16mm double glazed INTERLOCKING sashless vertical sliders in timber frames FSuSdF with aluminium covers and VS HP sill vertical section A-A | | | | <div> 949 Stud Road, Rowville VIC 3178, ABN 80 062 883 729</div> | Material: | in Timber frames |
| | | | | | | Finish: | - |
| | | | | | | Die/Part: | - |
| | | | | | | Dwg No: | VS 4P16 FSuSdF T |
| | Drwn: UF | Chk: - | Date: Jan2010 | Scale: 1:2@A4 | Sheet 19 of 22 | Revision: I | |


M:\Documentation\Website Downloads\3. Timber Frames\1. Vertical\1. Double Hung\VS 4P16 FSuSdF T (I) - 4 pane 16mm double glazed INTERLOCKING sashless vertical sliders in timber frames FSuSdF.dwg



IF IN DOUBT ASK - DO NOT SCALE DRAWING



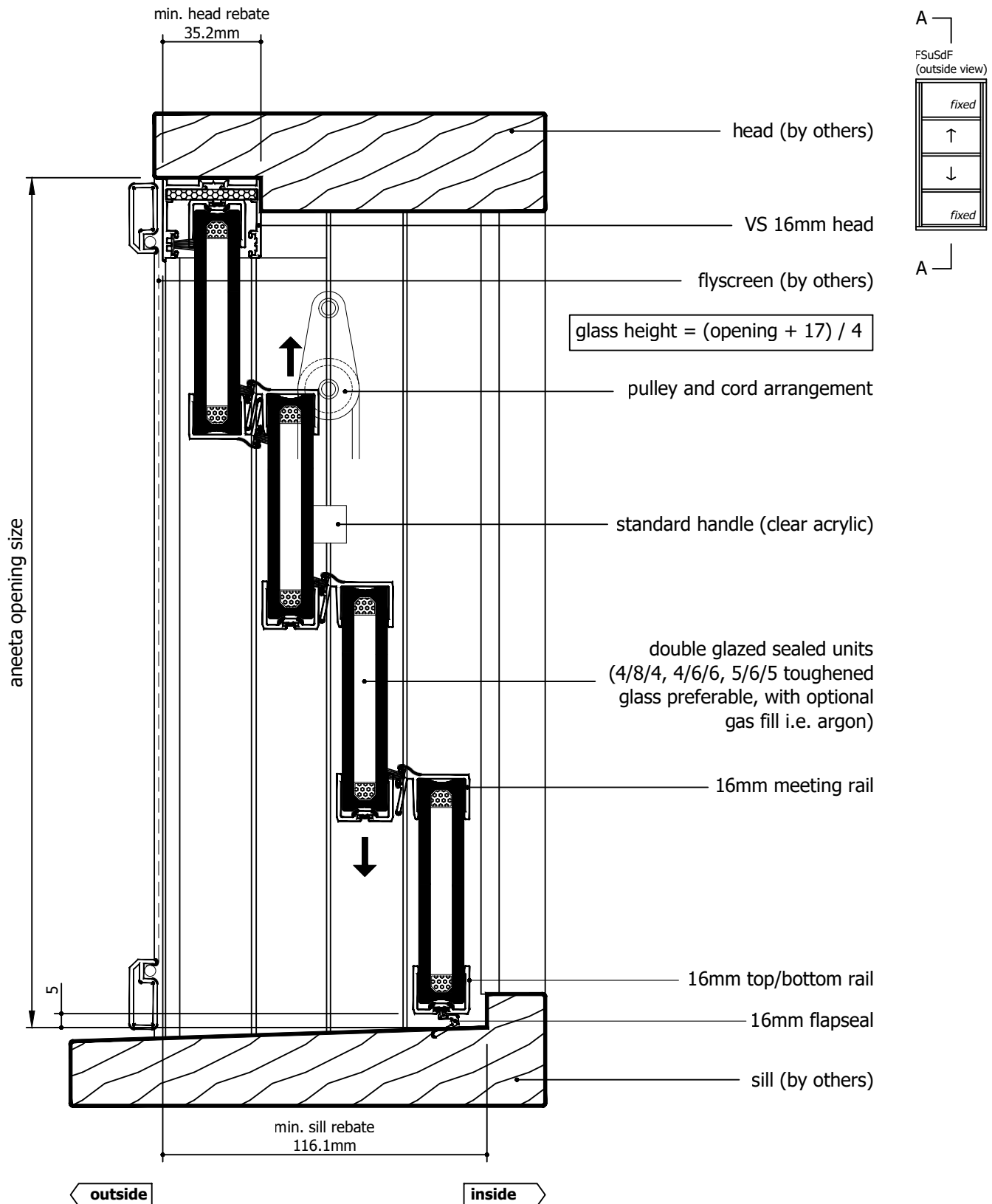
| Rev | Description | Approved By | Date |
|-----|---|-------------|-----------|
| I | 16mm flapseal option updated to QEZ48 | DF | 02/2/2026 |
| H | Delete P008 and replace with P229 - VS Sill | DF | 06/8/2025 |
| G | VS 300Pa/800Pa sill adaptor changed to VS Sill/VS HP Sill | DF | Oct2024 |
| F | Add various sill options | SE | Jun2024 |
| E | Update layout | SE | May2024 |
| D | Update lock and extension pin | SE | Dec2020 |
| C | Update sill and lock | RL | Jun2013 |

| | | | | | | |
|---|---|--|--|--|----------------------------|--|
| Proprietary and confidential The information contained in this drawing is the sole property of Aneeta Australia. Any reproduction in part or as a whole, without the written permission of Aneeta Australia is prohibited. | Title: 4 pane 16mm double glazed INTERLOCKING sashless vertical sliders in timber frames FSuSdF with aluminium covers and no sill adaptor vertical section A-A | | | | Material: in Timber frames | |
| |  949 Stud Road, Rowville VIC 3178, ABN 80 062 883 729 | | | | Finish: - | |
| | Drwn: UF Chk: - Date: Jan2010 Scale: 1:20A4 Sheet 20 of 22 Revision: I | | | | Die/Part: - | |
| | | | | | Dwg No: VS 4P16 FSuSdF T | |
| | | | | | | |


M:\Documentation\Website Downloads\3. Timber Frames\1. Vertical\1. Double Hung\VS 4P16 FSuSdF T (I) - 4 pane 16mm double glazed INTERLOCKING sashless vertical sliders in timber frames FSuSdF.dwg



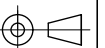
IF IN DOUBT ASK - DO NOT SCALE DRAWING



| Rev | Description | Approved By | Date |
|-----|---|-------------|-----------|
| I | 16mm flapseal option updated to QEZ48 | DF | 02/2/2026 |
| H | Delete P008 and replace with P229 - VS Sill | DF | 06/8/2025 |
| G | VS 300Pa/800Pa sill adaptor changed to VS Sill/VS HP Sill | DF | Oct2024 |
| F | Add various sill options | SE | Jun2024 |
| E | Update layout | SE | May2024 |
| D | Update lock and extension pin | SE | Dec2020 |
| C | Update sill and lock | RL | Jun2013 |

| | | | | | | |
|--|---|--------|---------------|---------------|--|-------------------------------|
| <p>Proprietary and confidential</p> <p>The information contained in this drawing is the sole property of Aneeta Australia. Any reproduction in part or as a whole, without the written permission of Aneeta Australia is prohibited.</p> | Title: 4 pane 16mm double glazed INTERLOCKING sashless vertical sliders in timber frames FSuSdF with aluminium covers and 16mm flapseal at sill vertical section A-A | | | |  949 Stud Road, Rowville VIC 3178, ABN 80 062 883 729 | Material: in Timber frames |
| | | | | | | Finish: - |
| | | | | | | Die/Part: - |
| | | | | | | Dwg No: VS 4P16 FSuSdF T |
| | Drwn: UF | Chk: - | Date: Jan2010 | Scale: 1:20A4 | Sheet 21 of 22 | Revision: I |

M:\Documentation\Website Downloads\3. Timber Frames\1. Vertical\1. Double Hung\VS 4P16 FSuSdF T (I) - 4 pane 16mm double glazed INTERLOCKING sashless vertical sliders in timber frames FSuSdF.dwg



IF IN DOUBT ASK - DO NOT SCALE DRAWING

glass width = opening - 40mm

aneeta opening size

flyscreen (optional by others)

16mm combination tee

top pane

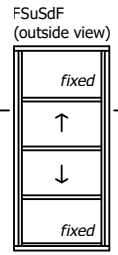
bottom pane

alumnium cover

lock

16mm multipane tee

jamb (by others)




outside

inside

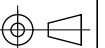
119.5mm

frame depth min 140mm

| Rev | Description | Approved | |
|-----|---|----------|-----------|
| | | By | Date |
| I | 16mm flapseal option updated to QEZ48 | DF | 02/2/2026 |
| H | Delete P008 and replace with P229 - VS Sill | DF | 06/8/2025 |
| G | VS 300Pa/800Pa sill adaptor changed to VS Sill/VS HP Sill | DF | Oct2024 |
| F | Add various sill options | SE | Jun2024 |
| E | Update layout | SE | May2024 |
| D | Update lock and extension pin | SE | Dec2020 |
| C | Update sill and lock | RL | Jun2013 |

| | | | | | | | |
|--|--|---------------|---------------|----------------|--|-------------------------------|--|
| <p>Proprietary and confidential</p> <p>The information contained in this drawing is the sole property of Aneeta Australia. Any reproduction in part or as a whole, without the written permission of Aneeta Australia is prohibited.</p> | Title: 4 pane 16mm double glazed INTERLOCKING sashless vertical sliders in timber frames FSuSdF with aluminium covers | | | |  949 Stud Road, Rowville VIC 3178, ABN 80 062 883 729 | Material: in Timber frames | |
| | horizontal section B-B | | | | | Finish: - | |
| | | | | | | Die/Part: - | |
| | | | | | | Dwg No: VS 4P16 FSuSdF T | |
| | | | | | | | |
| Drwn: UF | Chk: - | Date: Jan2010 | Scale: 1:1@A4 | Sheet 22 of 22 | Revision: I | | |

M:\Documentation\Website Downloads\3. Timber Frames\1. Vertical\1. Double Hung\VS 4P16 FSuSdF T (I) - 4 pane 16mm double glazed INTERLOCKING sashless vertical sliders in timber frames FSuSdF.dwg



IF IN DOUBT ASK - DO NOT SCALE DRAWING